

Around Town

Aims: To introduce lexis for buildings around town
To introduce and practise simple directions

Length of lesson: 45mins

Level/age: A1 Elementary

Language: *cinema, zoo, hospital, museum, art gallery*
How do I get to, Turn left/right, It's on your left/right, Walk past,
It's opposite

Materials: Handouts - 'Where is this', 'In the city, 'Roadmap.png'.

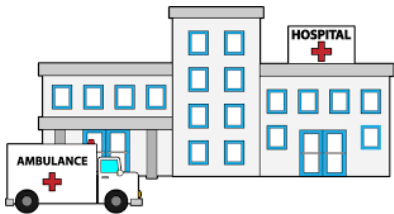
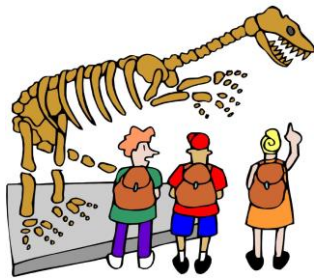
[Images from: clipartstation.com/clipart, www.gograph.com, www.abcteach.co, unsplash.com/s/photos/cinema, <https://teachers.onlineenglishexpert.com/>, gettyimages]

Procedure:

1. Context: Give out Task 1. Sts look at the pictures on 'Where is this?' In pairs sts discuss which cities they think they are. How do they know?
Answers: New York, Sydney, London, Paris
2. Pre-teach lexis (elicit, drill, concept check, board)
 - cinema
 - zoo
 - hospital
 - museum
 - gallery
3. Give out Task 2: Match the words with the pictures. Get feedback
4. Presentation
Elicit / drill / board functional exponents using board:
 - Excuse me, how do I get to..?
 - Turn left/right
 - It's on your left/right
 - Walk past the...
 - It's opposite the...
5. Concept check the functional exponents using the roadmap.
6. In pairs students practice asking and giving directions using the roadmap.
7. Feedback on errors + language review.

Extension task: Students in pairs write questions and responses.

IN THE CITY
Match the words to the pictures



ZOO

cinema

art gallery

museum

hospital

Where is this?



Roadmap

